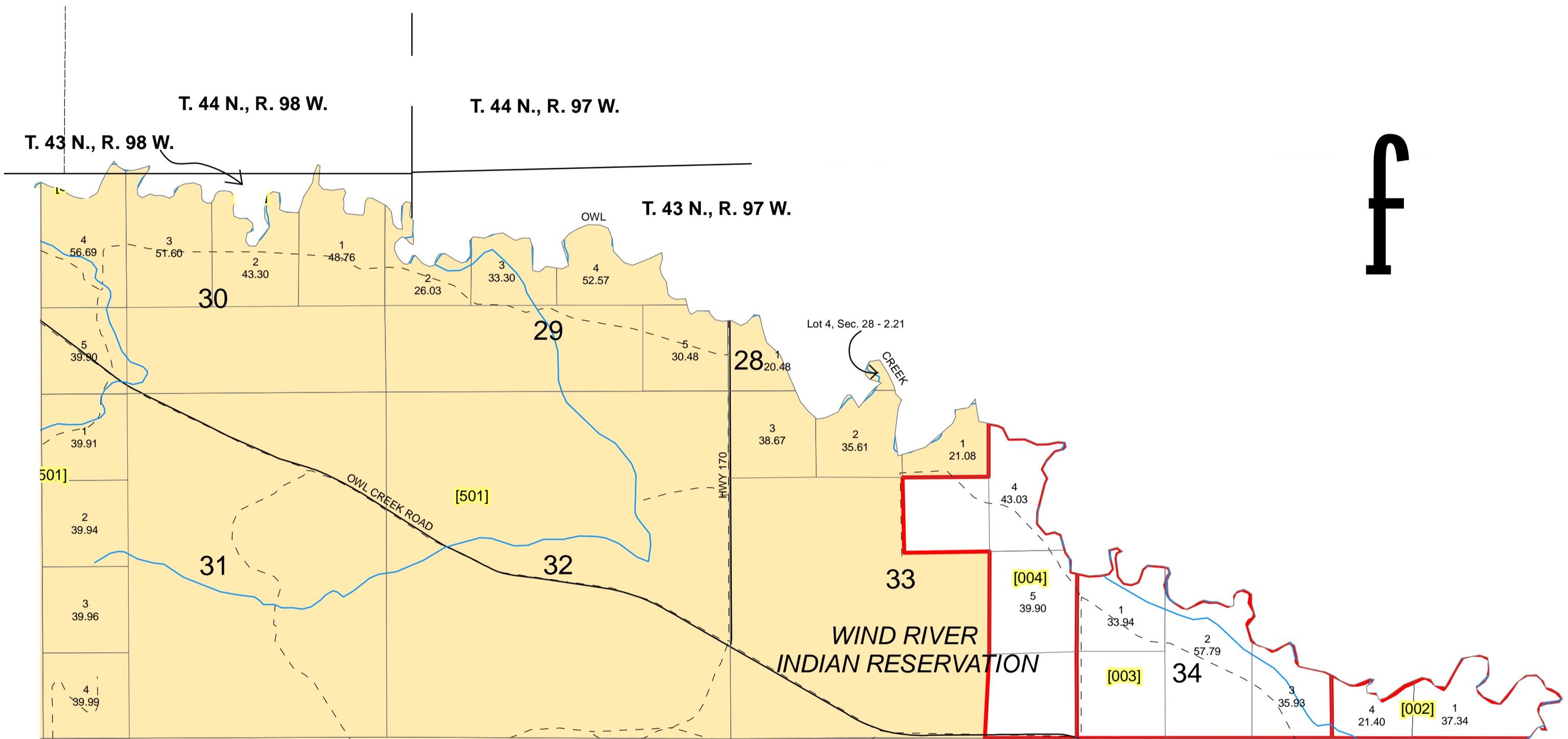


TOWNSHIP 9 NORTH, RANGE 3 EAST, W.R.M.

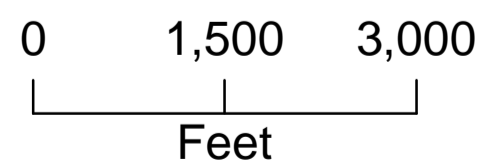
HOT SPRINGS COUNTY, WYOMING



Legend

- Private
- US_Lands
- Hydrology
- Private_Roads
- County_Roads

1 inch equals 1,500 feet



All or portion of the PLSS information on this document is subject to copyright by premier Data Services, they are not liable for any errors or inaccuracies.

The Hot Springs County Assessors office intends this map to be an aid in graphic representation of the displayed subject matter only.

Hot Springs County Assessor's Office
 Drawn by CGB 08/18/06
 Revised 12/31/2008 jmc
 Revised 7/15/2009

Township 9 N Range 3 E Wind River Meridian

Plat #	Owner	Account	County #	Acres	Legal Description
002	COAL DRAW GRAZING ASSOCIATION LLC	R0003740	3081	67.35	9N-3E-34 LOT 3 E 370', LOT 4 9N-3E-35 LOT 1 TOTAL ACRES 66.75 CORRESPONDS W/ PARCEL #5943
003	COAL DRAW GRAZING ASSOCIATION LLC	R0004903	3063	159.65	9N-3E-34 LOTS 1,2,3,4, SWSW TOTAL ACRES 159.65 CORRESPONDS W/ PARCEL #5938
004	HORSEWORKS WYOMING LLC	R0004904	4303	164.93	9N-3E-33 LOTS 4,5, SWNE, SESE TOTAL ACRES 164.93 CORRESPONDS W/ PARCEL #5985
501	U.S. I.T. & PADLOCK & WIND RIVER INDIAN RESERVATION	None		2307.35	9 N 3 E Sections: