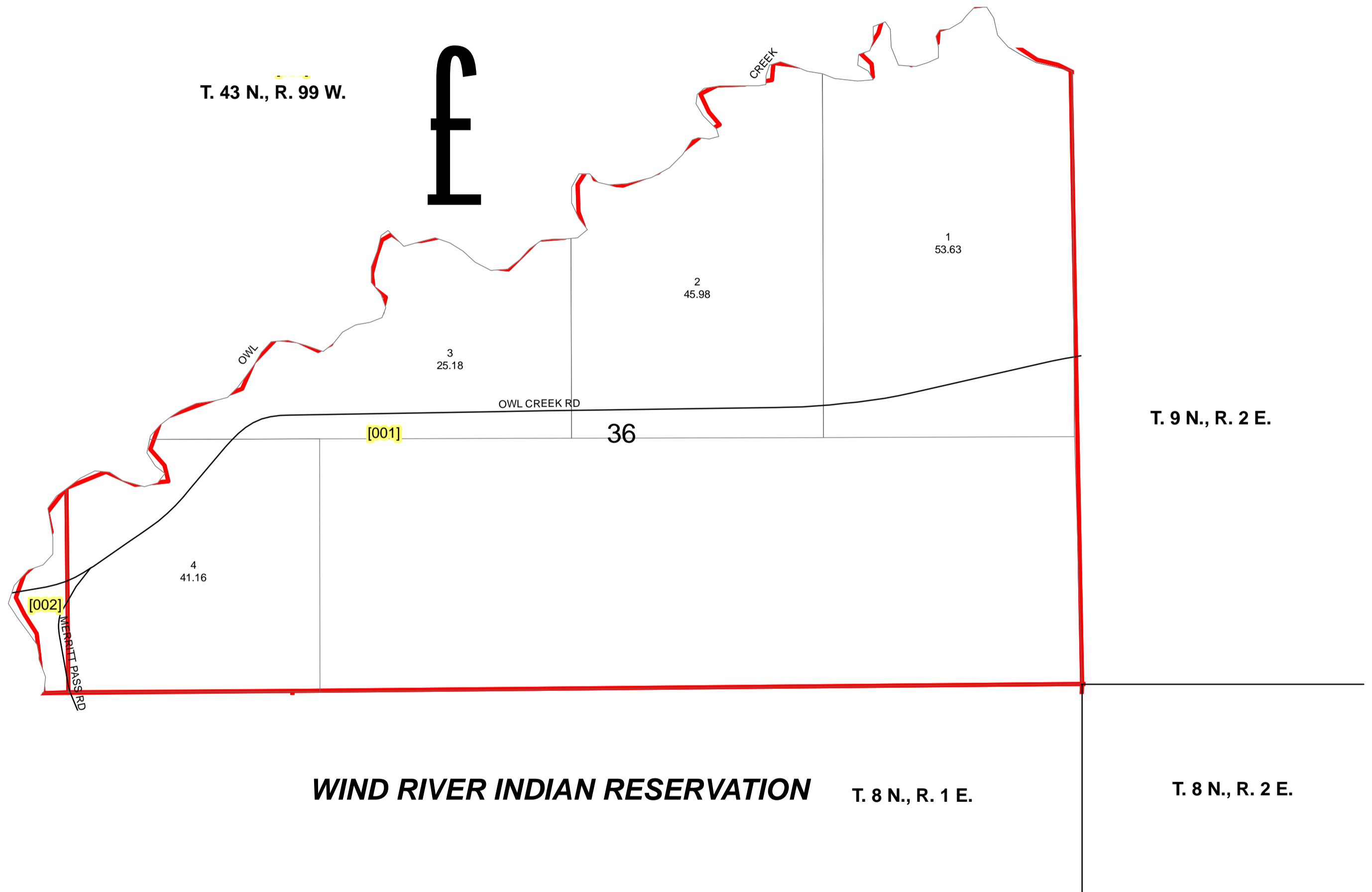


TOWNSHIP 9 NORTH, RANGE 1 EAST, W.R.M.

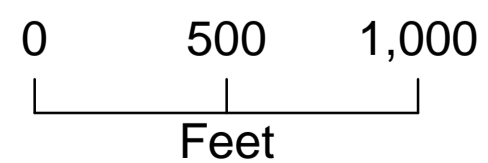
HOT SPRINGS COUNTY, WYOMING



Legend

- Private
- County_Roads

1 inch equals 500 feet



All or portion of the PLSS information on this document is subject to copyright by premier Data Services, they are not liable for any errors or inaccuracies.

The Hot Springs County Assessors office intends this map to be an aid in graphic representation of the displayed subject matter only.

Hot Springs County Assessor's Office
 Drawn by CGB 08/17/06
 Revised 12/31/2008 jmc
 Revised 7/15/2009

Township 9 N Range 1 E Wind River Meridian

Plat #	Owner	Account	County #	Acres	Legal Description
001	CAMPBELLS INC	R0003730	0114	291.95	9N-1E-36 LOTS 1,2,3,4, S/2SE,SESW TOTAL ACRES 291.95 CORRESPONDS W/ PARCEL #5909
002	HAY CREEK LAND & CATTLE CO LLC	R0003729	3139	1.78	9N-1E-35 FR 1.78