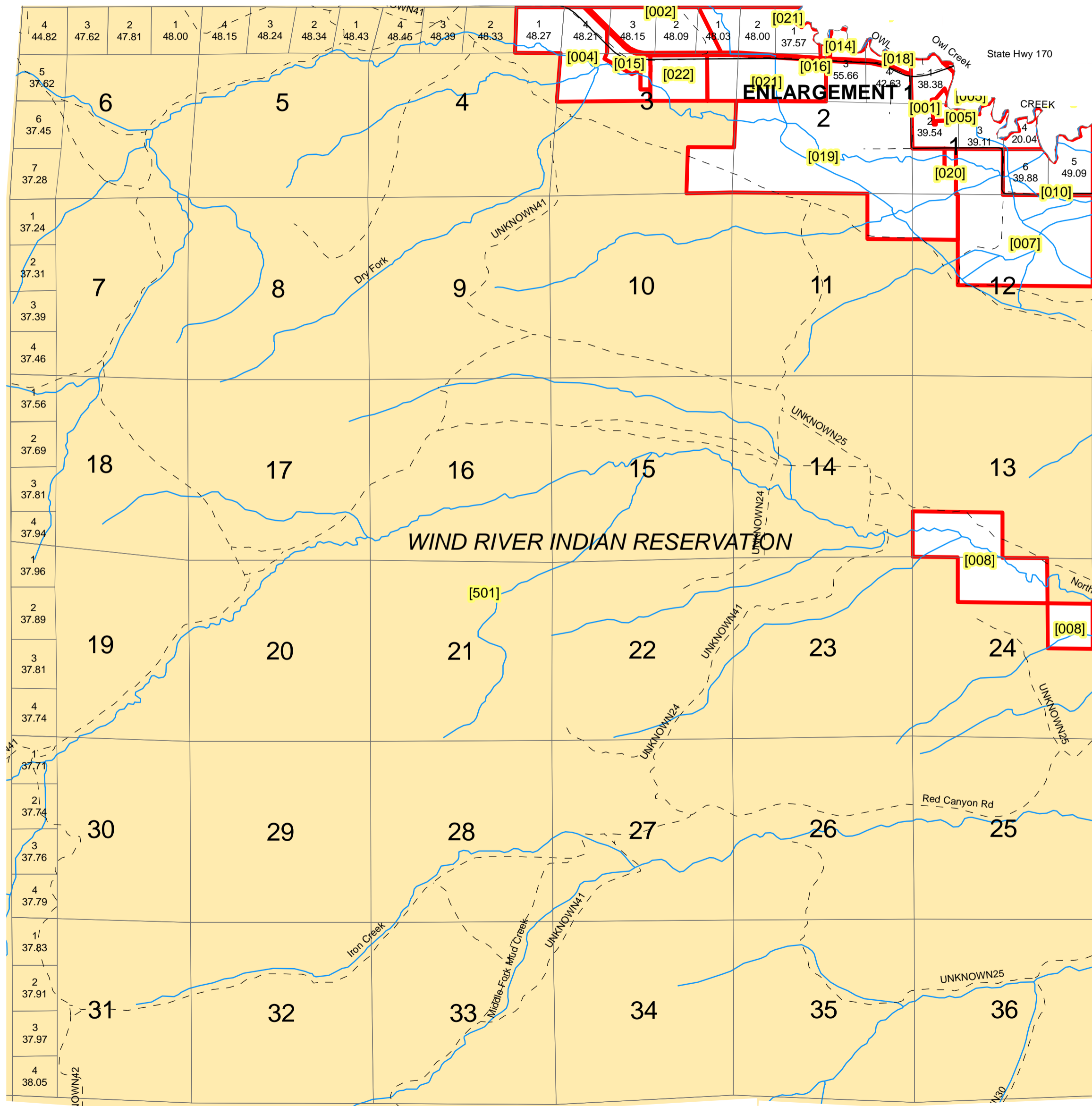
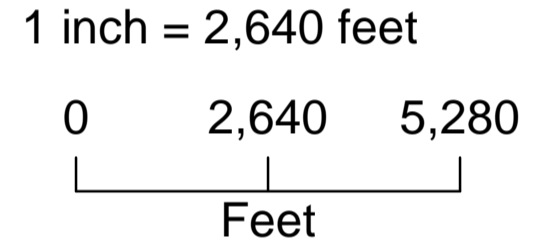


TOWNSHIP 8 NORTH, RANGE 3 EAST, W.R.M.

HOT SPRINGS COUNTY, WYOMING



f



Legend

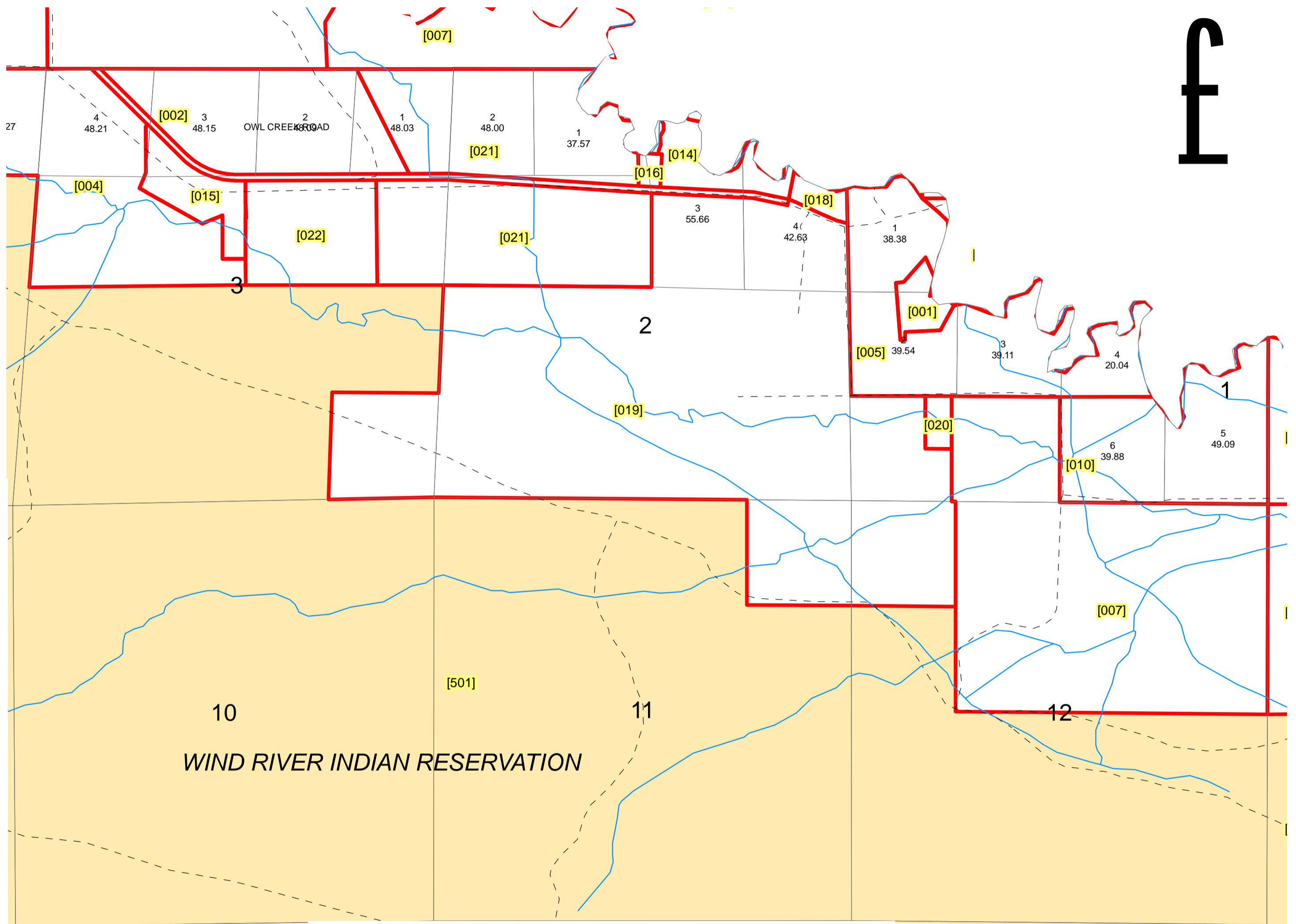
- Private
- USA_Lands
- County_Roads
- Private_Roads
- Hydrology

All or portion of the PLSS information on this document is subject to copyright by premier Data Services, they are not liable for any errors or inaccuracies.
The Hot Springs County Assessor's office intends this map to be an aid in graphic representation of the displayed subject matter only.


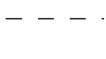
Hot Springs County Assessor's Office
Drawn by CGB 08/16/06
Revised 10/11/2011

T. 8 N., R. 3 E., W.R.M., ENLARGEMENT 1

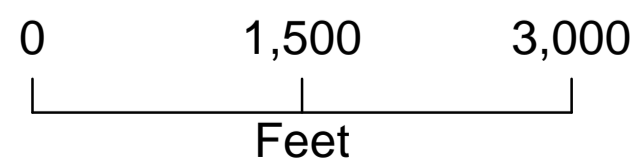
HOT SPRINGS COUNTY, WYOMING



Legend

-  Private
-  USA_Lands
-  Private_Roads
-  Hydrology

1 inch = 1,068.203079 feet



All or portion of the PLSS information on this document is subject to copyright by premier Data Services, they are not liable for any errors or inaccuracies.

The Hot Springs County Assessor's office intends this map to be an aid in graphic representation of the displayed subject matter only.

Hot Springs County Assessor's Office
Drawn by CGB 08/16/06
Revised 10/11/2011

