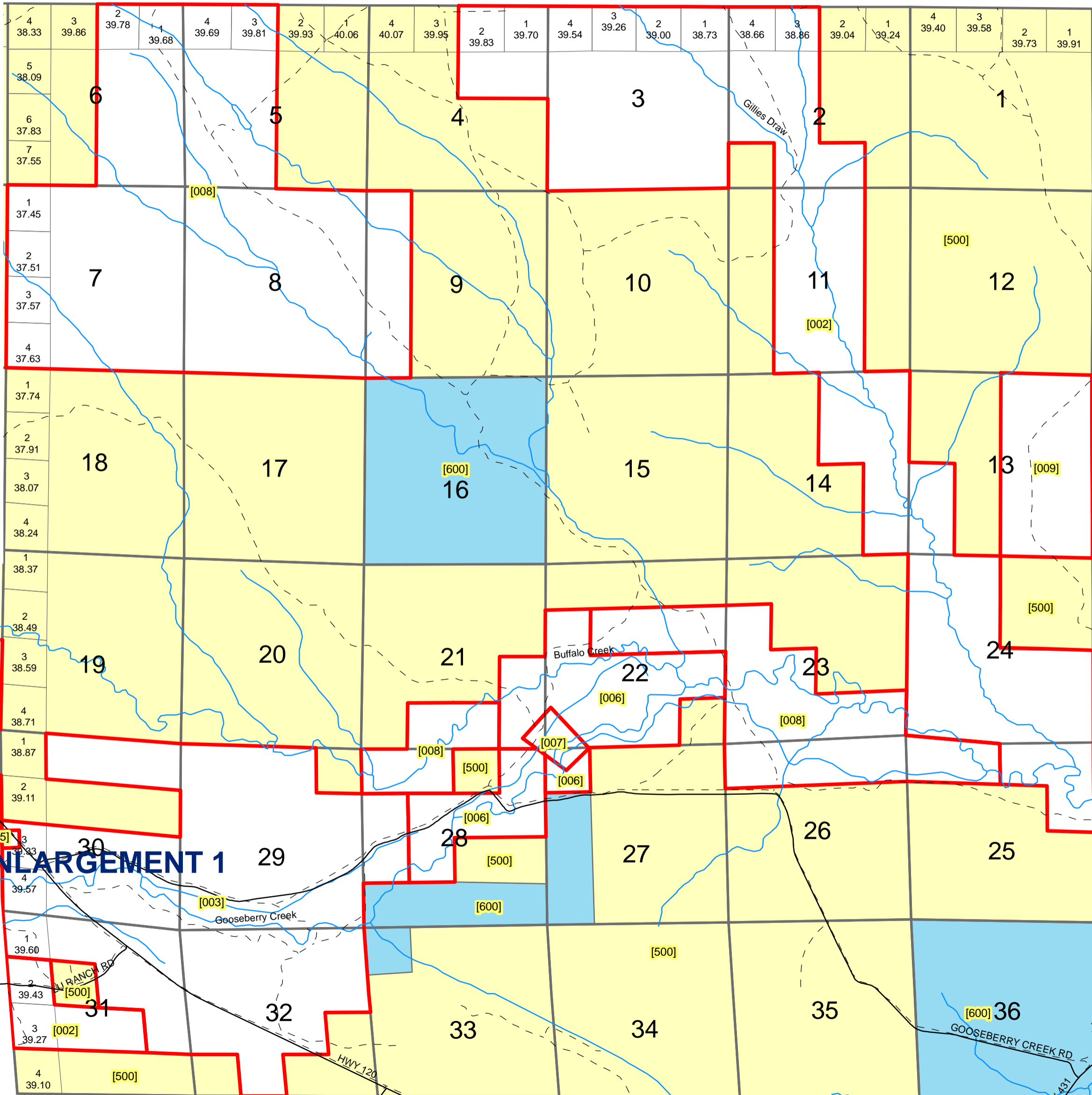
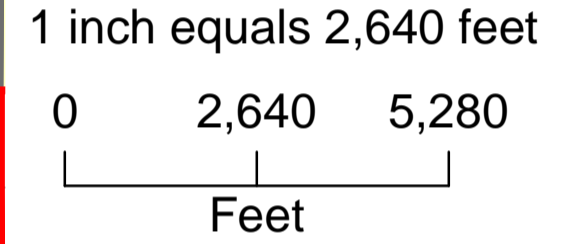


TOWNSHIP 47 NORTH, RANGE 98 WEST, 6TH P.M.

HOT SPRINGS COUNTY, WYOMING



f



Legend

- Private
- Statelands
- BLM
- County_Roads
- Private_Roads
- Hydrology

ENLARGEMENT 1

All or portion of the PLSS information on this document is subject to copyright by premier Data Services, they are not liable for any errors or inaccuracies.
The Hot Springs County Assessor's office intends this map to be an aid in graphic representation of the displayed subject matter only.

Township 47 N Range 98 W Sixth Principal Meridian

Plat #	Owner	Account	County #	Acres	Legal Description
002	LU SHEEP CO	R0003167	3001	2512.28	47-98-2 SWSE, N/2SW 47-98-3 LOTS 1,2,3,4, S/2N/2, S/2 47-98-4 LOTS 1,2 S/2NE 47-98-11 E/2W/2, W/2E/2 47-98-13 W/2SW 47-98-14 NE/4, E/2SE 47-98-24 W/2, SE/4 47-98-25 N/2NE, SENE 47-98-31 LOTS 2,3, NESW, NWSE TOTAL ACRES 2512.28
003	SCHAEFER KARL J & DEANA L ETAL	R0003171	0479	1814	47-98-28 SWNW, NWSW 47-98-29 W/2, W/2NE, SENE, SE/4 47-98-30 LOTS 3,4, E/2SW, SE/4, N/2NE, NENW 47-98-31 LOT 1, NENW, NE/4, NESE 47-98-32 N/2, N/2SW, SESW, NWSE (LESS 50 A. H/W) LESS 8.5 A TO HIGHWAY IN SEC 30-32 TOTAL ACRES 1814.00
006	BARNETT LAND AND LIVESTOCK LLC	R0003169	3905	600.07	47-98-21 E/2SE 47-98-22 SWNW, SW/4, N/2SE, SWSE 47-98-27 NWNW 47-98-28 NENE, S/2NE, SENW, NESW LESS FR IN 21 22 27 & 28
007	BARNETT TRUSTS	R0003170	0233	39.93	47-98-21 SESE FR 47-98-22 SWSW FR 47-98-27 NWNW FR 47-98-28 NENE FR TOTAL ACRES 39.93
008	HILLBERRY CATTLE COMPANY	R0004003	0659	2869.12	47-98-5 LOTS 3,4, S/2NW, SW/4 47-98-6 LOTS 1,2, S/2NE, SE/4 47-98-7 ALL 47-98-8 ALL 47-98-9 W/2W/2 47-98-21 SWSE, SESW 47-98-22 S/2NE, SENW 47-98-23 SWNW, S/2SE, SW/4 47-98-25 N/2NW 47-98-26 N/2N/2 -- See Acct #R0004003 for Full Legal
009	HILLBERRY ENTERPRISES INC	R0004004	0669	320	47-98-13 E/2 TOTAL ACRES 320.00
500	BLM	None		13171.77	47 N 98 W Sections:
600	STATE OF WYOMING	None		1600	47 N 98 W Sections:
601	WYOMING HIGHWAY DEPT	None		50	47 N 98 W Sections: