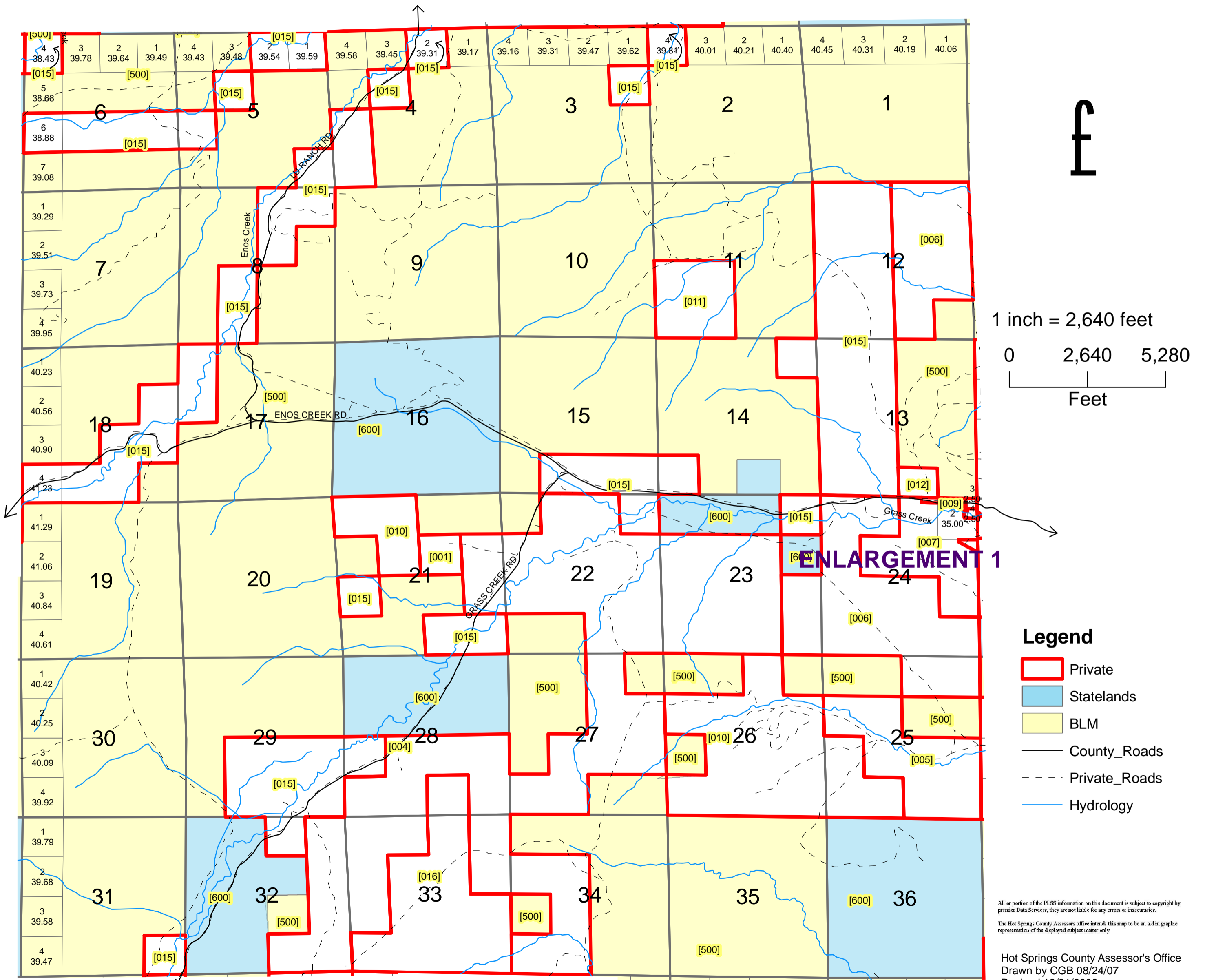


TOWNSHIP 46 NORTH, RANGE 99 WEST, 6TH P.M. HOT SPRINGS COUNTY, WYOMING



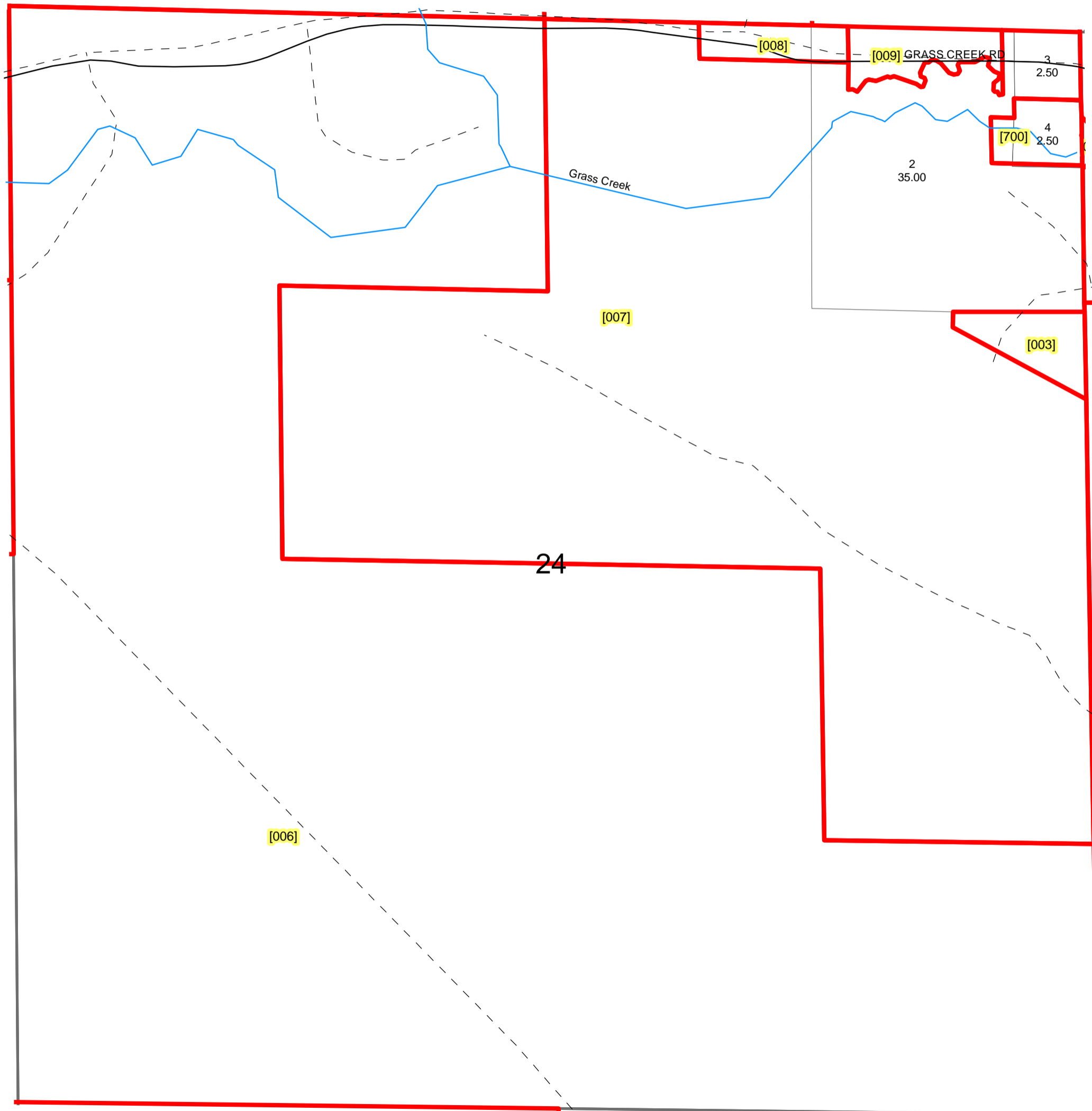
1 inch = 2,640 feet
0 2,640 5,280
Feet

- Legend**
- Private
 - Statelands
 - BLM
 - County_Roads
 - Private_Roads
 - Hydrology

All or portion of the PLSS information on this document is subject to copyright by premier Data Services, they are not liable for any errors or inaccuracies.
The Hot Springs County Assessor's office intends this map to be an aid in graphic representation of the displayed subject matter only.

TOWNSHIP 46 NORTH, RANGE 99 WEST, 6TH P.M. ENLARGEMENT 1

HOT SPRINGS COUNTY, WYOMING



1 inch = 500 feet

0 500 1,000

Feet

- Legend**
- Private
 - County_Roads
 - Private_Roads
 - Hydrology

All or portion of the PLSS information on this document is subject to copyright by premier Data Services, they are not liable for any errors or inaccuracies.

The Hot Springs County Assessor's office intends this map to be an aid in graphic representation of the displayed subject matter only.

Hot Springs County Assessor's Office
 Drawn by CGB 08/24/07
 Revised 12/31/2008
 Revised 7/15/2009

