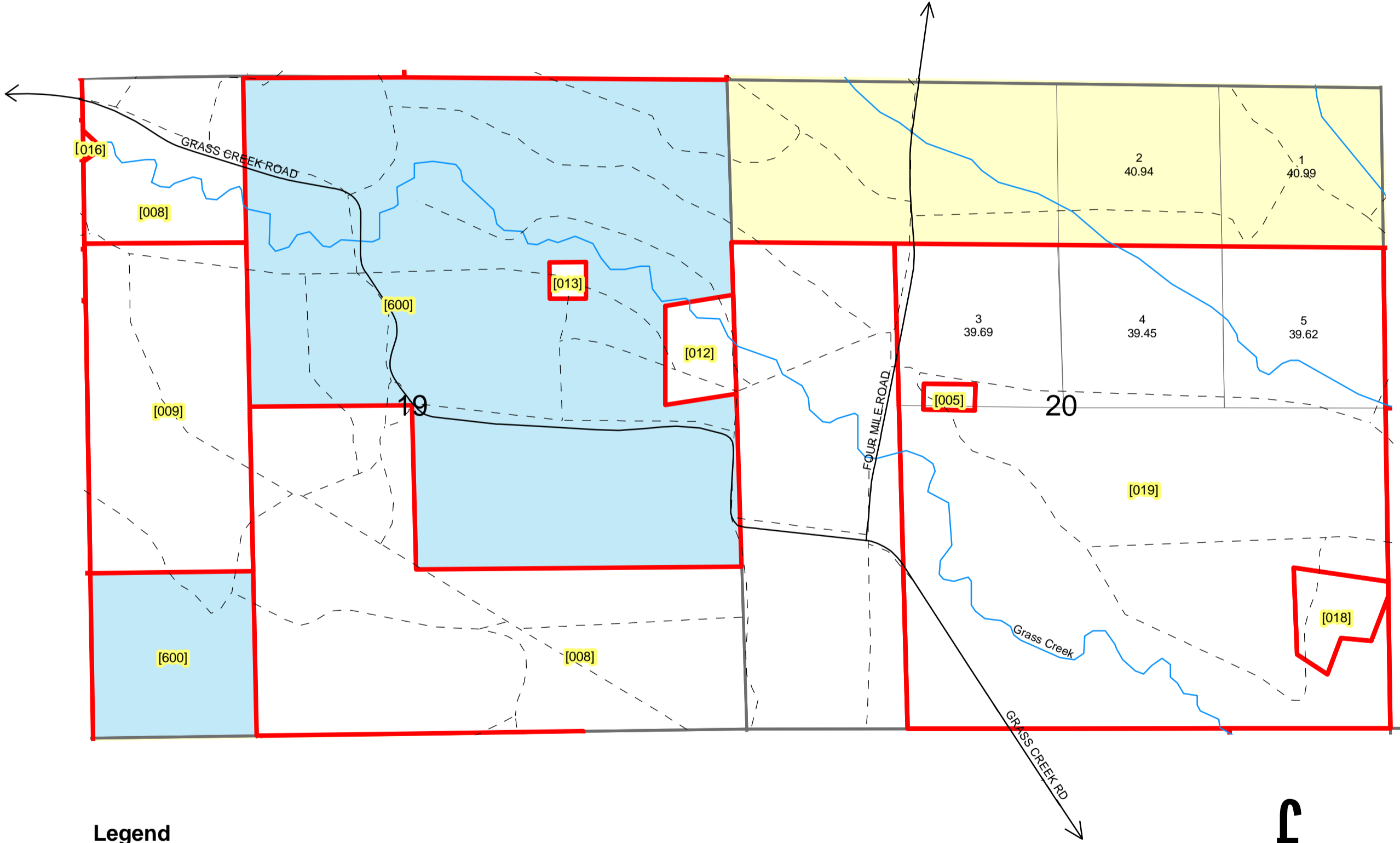




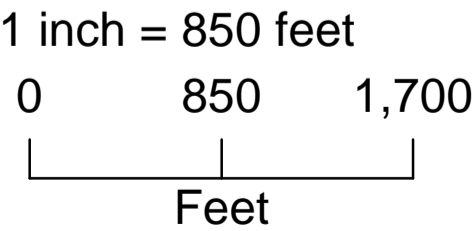
# TOWNSHIP 46 NORTH, RANGE 98 WEST, 6TH P.M., ENLARGEMENT 1

## HOT SPRINGS COUNTY, WYOMING



**Legend**

- Private
- Statelands
- BLM
- County\_Roads
- Private\_Roads
- Hydrology



£

All or portion of the PLSS information on this document is subject to copyright by premier Data Services, they are not liable for any errors or inaccuracies.

The Hot Springs County Assessor's office intends this map to be an aid in graphic representation of the displayed subject matter only.

Hot Springs County Assessor's Office  
 Drawn by CGB 08/23/07  
 Revised 12/31/2008  
 Revised 7/15/2009

