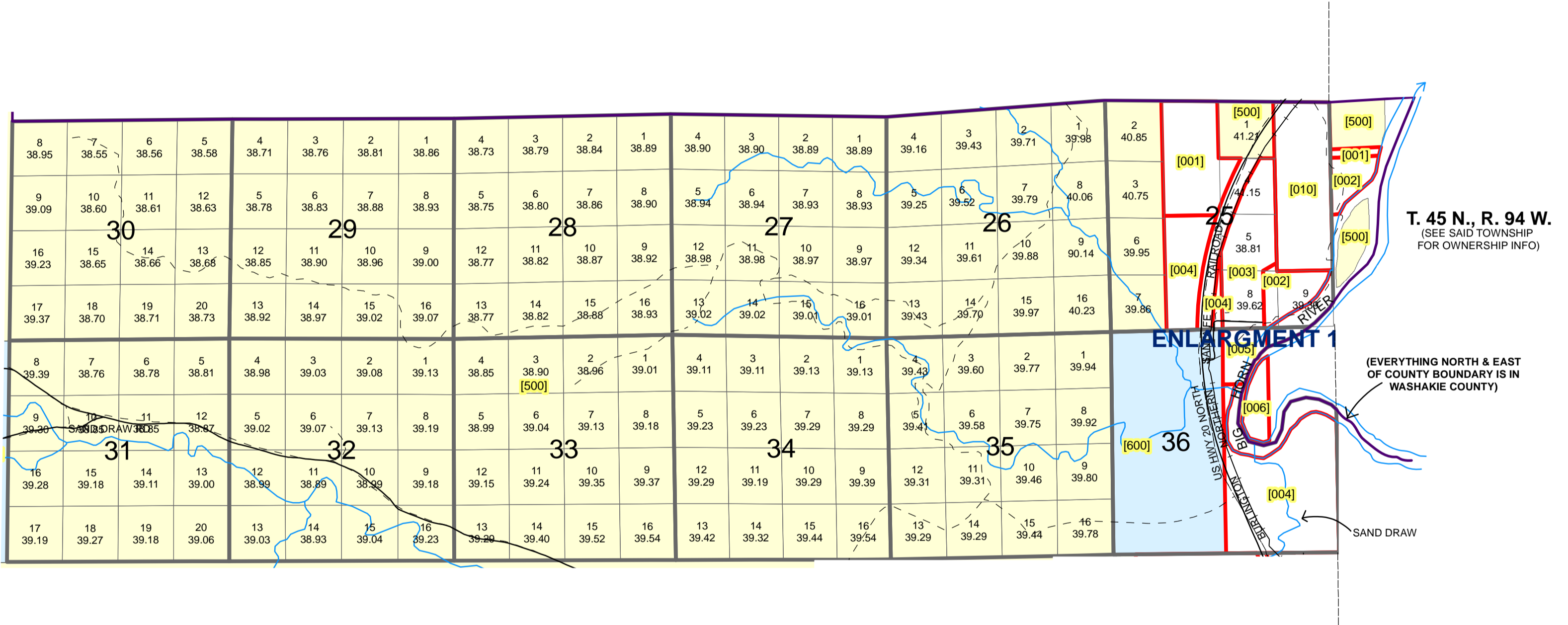


TOWNSHIP 45 NORTH, RANGE 95 WEST, 6TH P.M.

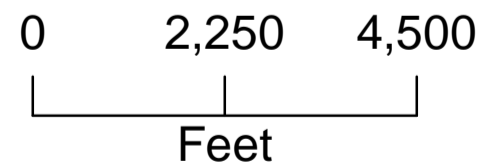
HOT SPRINGS COUNTY, WYOMING



Legend

- Private
- State Lands
- BLM
- County_Boundary
- Hydrology
- County Roads
- Private Roads
- Railroad
- Hydrology

1 inch equals 2,250 feet



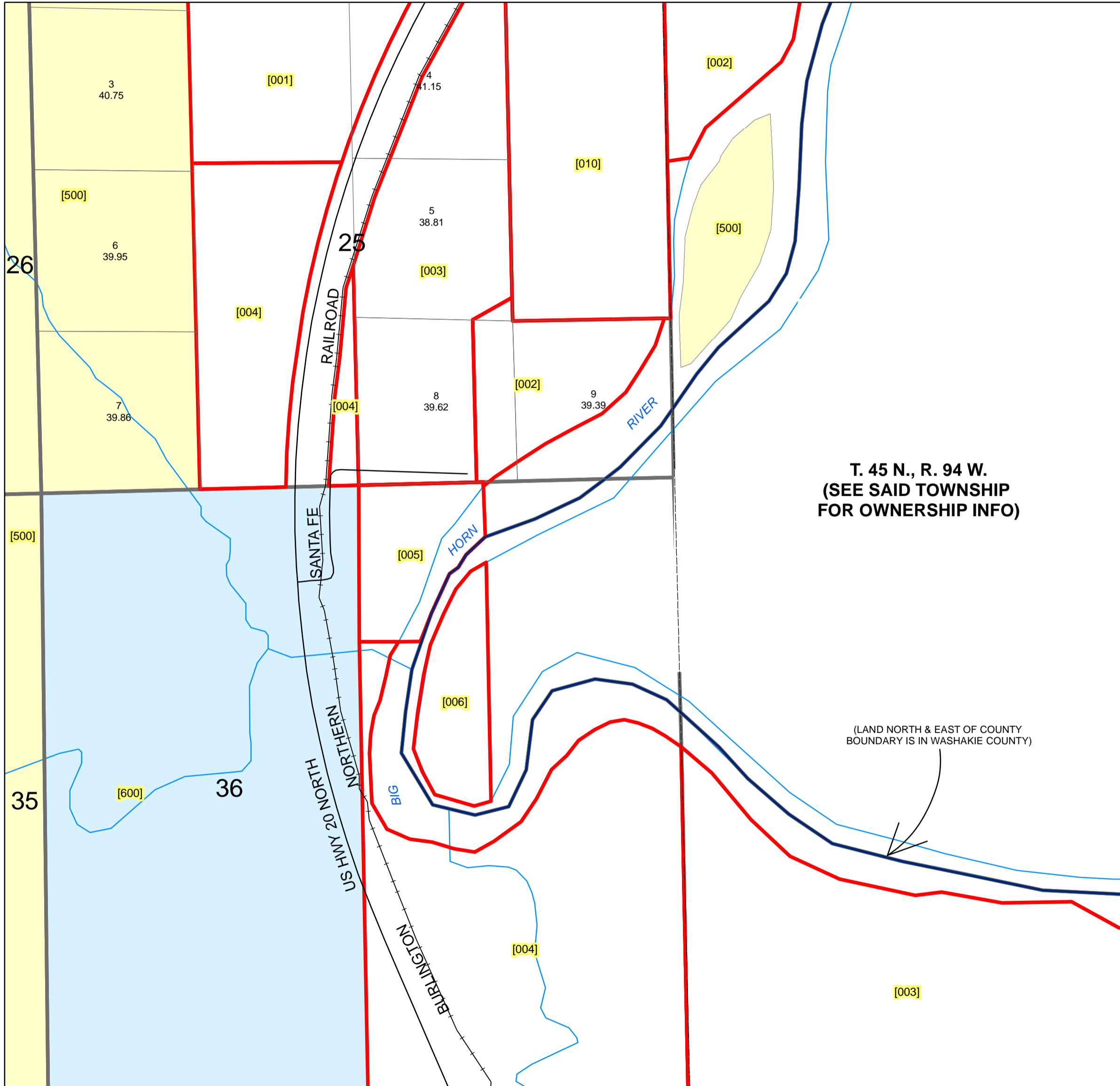
All or portion of the PLSS information on this document is subject to copyright by premier Data Services, they are not liable for any errors or inaccuracies.

The Hot Springs County Assessor's office intends this map to be an aid in graphic representation of the displayed subject matter only.

Hot Springs County Assessor's Office
 Drawn by CGB 08/16/07
 Revised 12/31/2008
 Revised 7/15/2009

TOWNSHIP 45 NORTH, RANGE 95 WEST, 6TH P.M., ENLARGEMENT 1

HOT SPRINGS COUNTY, WYOMING



f

1 inch equals 750 feet

0 750 1,500

Feet

T. 45 N., R. 94 W.
(SEE SAID TOWNSHIP
FOR OWNERSHIP INFO)

(LAND NORTH & EAST OF COUNTY
BOUNDARY IS IN WASHAKIE COUNTY)

Legend

- Private
- Statelands
- BLM
- County_Boundary
- County_Roads
- Railroad
- Hydrology

All or portion of the PLSS information on this document is subject to copyright by premier Data Services, they are not liable for any errors or inaccuracies.

The Hot Springs County Assessors office intends this map to be an aid in graphic representation of the displayed subject matter only.

Hot Springs County Assessor's Office

Drawn by CGB 08/20/07

Revised 12/31/2008

Revised 7/15/2009

Township 45 N Range 95 W Sixth Principal Meridian

Plat #	Owner	Account	County #	Acres	Legal Description
001	SACHS TERRY AND SHARON	R0003094	0855	88	45 95 25 LOT 4(SWNE)FR LYING WESTERLY OF W R/W LINE H/W U.S. 20, SENW, NENW TOTAL ACRES 88.0 MOBILE HOME-1976 SKYLINE 14' X 66' DECAL #207
002	ZASTROW JAMES J	R0003095	0908	43.49	FR LOT 9 (SESE) LYING W OF RIVER (33.00 ACRES) FR LOT 8 E OF RR FR OF LOT 5 FR OF NWNE (0.491 ACRES) TOTAL ACRES 43.491
003	EDWARDS EARL F & VESTA M	R0003096	0184	94.5	45-95-25 PART OF LOTS 4,5, & 8(SWSE) WHICH IS EAST OF RR LESS FR ALONG E SIDE LOT 8 45-95-36 FR NWNE TOTAL ACRES 94.509
004	MEAD BRADFORD S & KATHERINE L	R0003098	3114	300.75	45 95 25 E2SW (LESS 5 A H/W R/W) 45 95 36 SE, SWNE & N2NE FR &SENE FR LYING W OF RIVER TOTAL ACRES 300.75
005	OSTERMANN BRUCE D & BARBARA M	R0003099	0210	24.69	45-95-36 TRACT IN N/2N/2 COMM AT N/4 OF SEC 36 DESCR BY METES & BOUNDS ACRES 24.69
006	AXTELL RANCHES LLC	R0003100	0098	44.39	45 95 25 LOT 9 FR LYING E OF BIG HORN RIVER 45 95 36 E2E2 FR LYING E OF BIG HORN RIVER TOTAL ACRES 44.39
010	SCHLAGER JOHN A & MICHELE L	R0003097	4075	120	45 95 25 NENE, SENE, NESE TOTAL ACRES 120.0
500	BLM	None		6465.17	45 N 95 W Sections:
600	STATE OF WYOMING	None		320	45 N 95 W Sections: