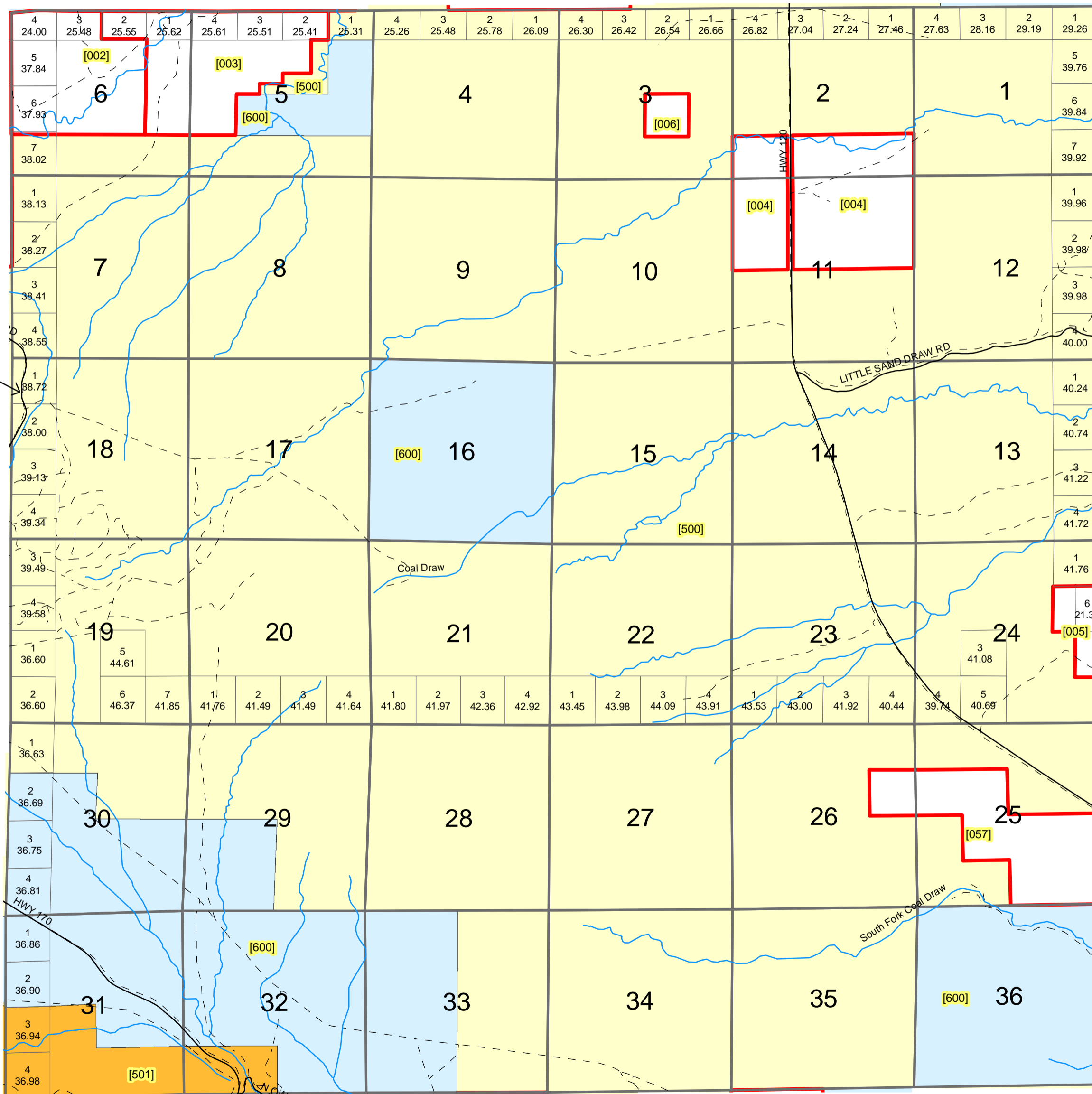
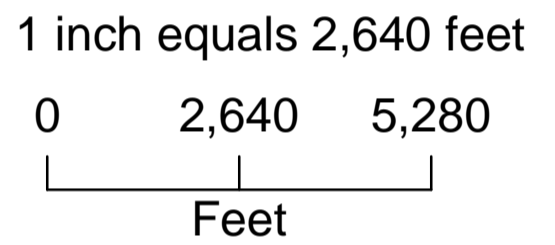


TOWNSHIP 44 NORTH, RANGE 97 WEST, 6TH P.M.

HOT SPRINGS COUNTY, WYOMING



f



Legend

- Private
- Statelands
- USA_Land
- BLM
- County_Roads
- Private Roads
- Hydrology

All or portion of the PLSS information on this document is subject to copyright by premier Data Services, they are not liable for any errors or inaccuracies.
The Hot Springs County Assessor's office intends this map to be an aid in graphic representation of the displayed subject matter only.

Hot Springs County Assessor's Office
 Drawn by CGB 08/09/07
 Revised 12/31/2008
 Revised 7/15/2009

Township 44 N Range 97 W Sixth Principal Meridian

Plat #	Owner	Account	County #	Acres	Legal Description
001	HOLDEN LAND COMPANY LLC	R0003058	3076	319.78	44-97-25 SE/4, NESW, S/2NW 44-97-26 SENE TOTAL ACRES 319.78 TOM SANFORD UNIT
002	MINK DOROTHY J	R0003056	0452	285.25	44-97-06 LOTS 3,4,5,6, SENW, NESW, SWNE, NWSE TOTAL ACRES 285.25 CORRESPONDS WITH PARCEL #8062
003	PROSPECT LAND & CATTLE LLC	R0003055	0642	335.2	44-97-05 LOT 2,3,4, SWNW, NWSW, NWSWNE, W/2W/2NESWNE 44-97-05 N/2SENW, N/2S/2SENW,S/2SWSSENW 44-97-6 LOTS 1,2 NESE, SENE TOTAL ACRES 335.20 CORRESPONDS WITH PARCEL #8073
004	KAGIE H JOSEPH	R0003053	0403	461.96	44-97-02 S/2S/2 44-97-11 N/2 LESS 18.04 H/W TOTAL 461.96 ACRES CORRESPONDS WITH PARCEL #8027
005	SYRACUSE MINING CO	R0003057	0798	61.36	44-97-24 W/2SENE, E/2NESE, LOT 6 TOTAL ACRES 61.36
006	WRIGHT J D	R0003054	4045	40	44-97-3 NWSE TOTAL 40 ACRES CORRESPONDS WITH PARCEL #8107
500	BLM	None		17464.75	44 N 97 W Sections:
501	UNITED STATES IN TRUST	None		313.92	44 N 97 W Sections:
600	STATE OF WYOMING	None		3264.01	44 N 97 W Sections: