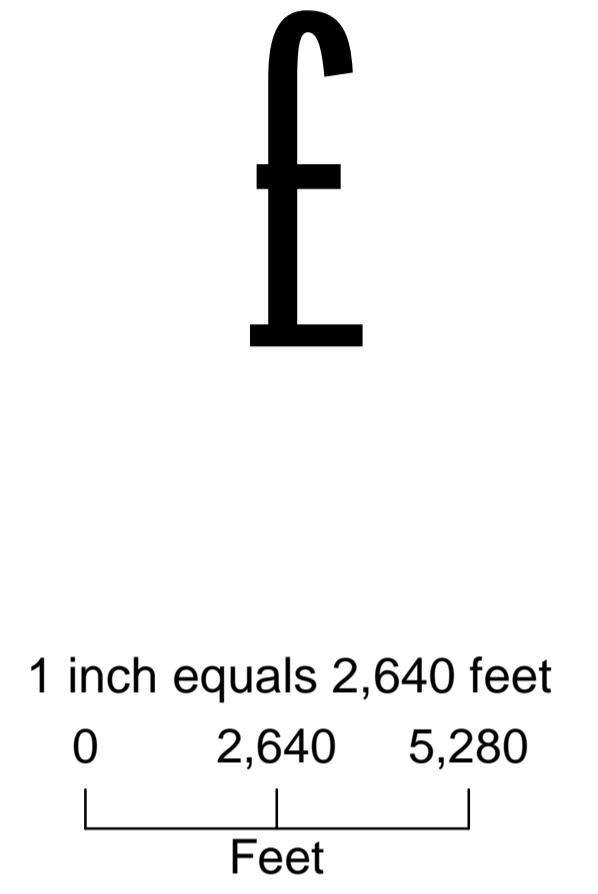
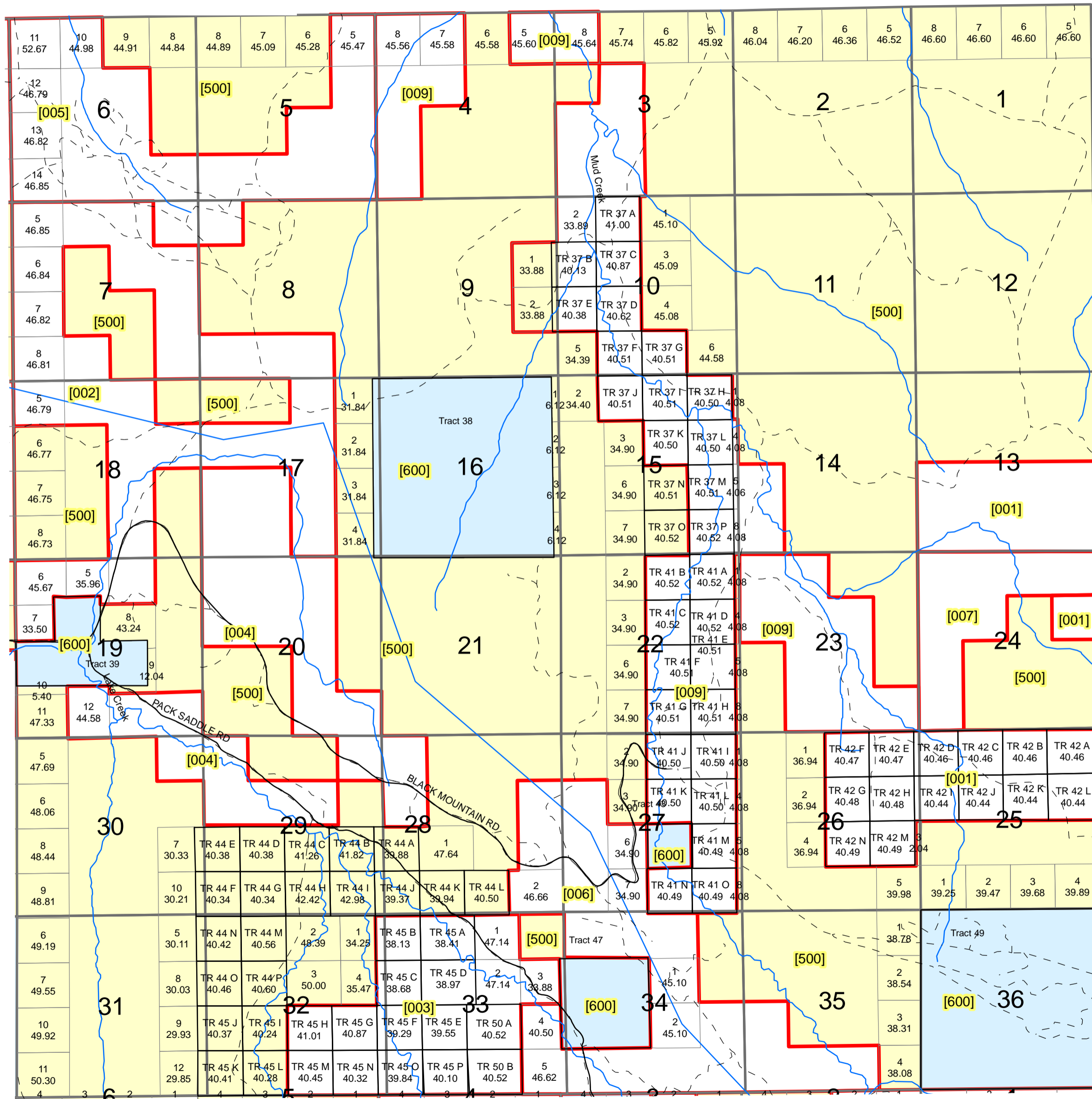


TOWNSHIP 43 NORTH, RANGE 91 WEST, 6TH P.M.

HOT SPRINGS COUNTY, WYOMING



- ### Legend
- Private
 - Statelands
 - BLM
 - County_Roads
 - Private Roads
 - Hydrology

All or portion of the PLSS information on this document is subject to copyright by premier Data Services, they are not liable for any errors or inaccuracies.

The Hot Springs County Assessor's office intends this map to be an aid in graphic representation of the displayed subject matter only.

Hot Springs County Assessor's Office
 Drawn by CGB 07/06/07
 Revised 12/31/2008
 Revised 7/15/2009

Township 43 N Range 91 W Sixth Principal Meridian

Plat #	Owner	Account	County #	Acres	Legal Description
001	LUNGREN CATTLE COMPANY LLC	R0001329	0844	926.48	43-91-13 S/2 43-91-24 SENE 43-91-25 TR. 42, A,B,C,D,I,J,K,L 43-91-26 TR. 42, E,F,G,H,M,N TOTAL ACRES 926.48
002	MISHURDA BIRGIR R & DEBORA S	R0001328	0647	1269.24	43-91-7 5,6,7,8, NENW, NWNE,S/2NE, SESW, E/2SE 43-91-8 S/2SW, SWSE 43-91-17 W/2E/2, S/2NW 43-91-18 W/2E/2, NENW, SENE, LOT 5 43-91-19 LOTS 5,6,7, NWNE TOTAL ACRES 1269.24
003	LYMAN RANCH CO	R0001333	0588	684.92	43-91-32 TRS 45,A,B,C,D,E,F, G,H,M,N,O,P 43-91-33 LOTS 1,2,3, W/2SE (TR 50) TOTAL ACRES - 684.92
004	ANDREEN CHUCK L	R0001330	3087	964.58	43-91-17 SW/4 43-91-19 LOT 12, S/2SE 43-91-20 W/2E/2, SESE, NW/4 43-91-28 W/2NW 43-91-29 W/2NW, SENW, SWNE, NENE 43-91-30 NENE TOTAL ACRES 964.58
005	DENNIS RANCH LTD LLC	R0001327	3017	923.58	43-91-5 LOT 5, SENE, SE/4, S/2SW 43-91-6 LOTS 10,11,12,13,14,SWNE, E/2SW, SENW, W/2SE, SESE 43-91-7 NENE 43-91-8 NWNW TOTAL ACRES 923.58
006	BROWN MERRILL GEO & TERESA H	R0001332	0090	973.78	43 91 27 LOTS 6 & 7,W/2SE,SWNW 43 91 28 LOT 2,SENE,NESE 43 91 33 LOTS 4 & 5 43 91 34 LOTS 1 & 2,S/2S2,NESE,N2NW,NWNE 43 91 35 W/2SW,SESW,SWSE TOTAL ACRES 973.78 EDWARDS PLACE
007	LUNGREN CATTLE COMPANY LLC	R0001331	0303	320	43-91-24 N/2NE, NW/4, W/2SW TOTAL ACRES 320.0
009	LYMAN RANCH CO INC	R0001326	1467	2243.15	43-91-3 LOT 8, SW/4, SENW 43-91-4 S/2NW, W/2SW, LOTS 5,7,8 43-91-10 TR 37 A,B,C,D,E,F,G & LOT 2 43-91-14 W/2SW 43-91-15 TR 37 H,I,J,K,L,M,R, LOTS 4,5,8 43-91-22 -- See Acct #R0001326 for Full Legal
500	BLM	None		13429.38	43 N 91 W Sections:
600	STATE OF WYOMING	None		1640.00	43 N 91 W Sections: