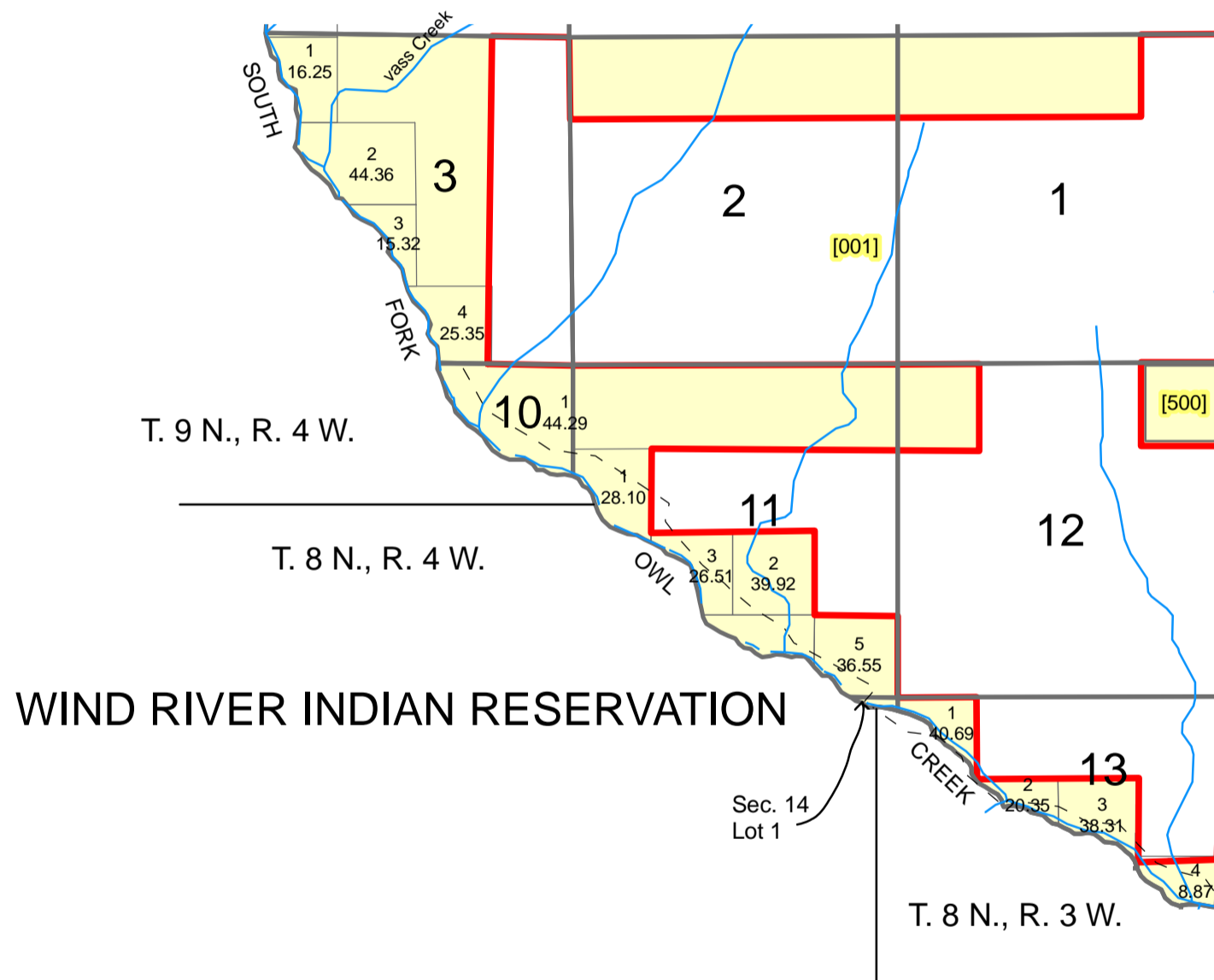


# TOWNSHIP 43 NORTH, RANGE 103 WEST, 6TH P.M.

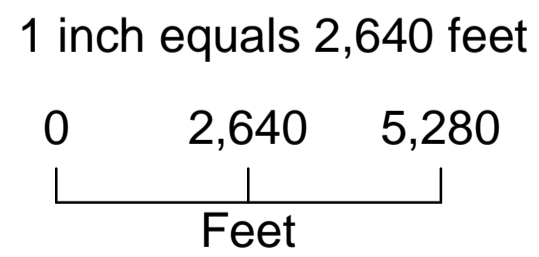
## HOT SPRINGS COUNTY, WYOMING

f



### Legend

- Private
- BLM
- Private\_Roads



All or portion of the PLSS information on this document is subject to copyright by premier Data Services, they are not liable for any errors or inaccuracies.

The Hot Springs County Assessors office intends this map to be an aid in graphic representation of the displayed subject matter only.

Hot Springs County Assessor's Office  
 Drawn by CGB 07/24/07  
 Revised 12/31/2008  
 Revised 7/15/2009

## Township 43 N Range 102 W Sixth Principal Meridian

Plat #	Owner	Account	County #	Acres	Legal Description
001	HAY CREEK LAND & CATTLE CO LLC	R0001324	3198	480	43-02-25 SW 43-02-26 S2N2, N2S2 TOTAL ACRES 480.00
002	HAY CREEK LAND & CATTLE CO LLC	R0001321	3138	75.1	43-02-12 LOT 1 43-02-13 LOTS 3,4 TOTAL ACRES 77.10
003	HAY CREEK LAND & CATTLE CO LLC	R0001316	3184	1095.97	43-02-01 LOTS 3,4, SW, W2SE, S2NW, SWNE 43-02-02 S2SW, SE 43-02-11 N2NW 43-02-12 LOTS 2,3,4, SW, W2SE, NENW TOTAL ACRES 1095.97
004	HAY CREEK LAND & CATTLE CO LLC	R0001323	0534	2261.82	43-02-13 W2W2 43-02-14 S2NW, SW, E2 43-02-15 NENW, W2NE, SENE, N2SE, SESE 43-02-22 SENW, E2SW, NENE, S2NE, SE 43-02-23 W2NW, SENW, SW, W2SE 43-02-24 W2W2, SESW, SWSE, LOT 4 43-02-25 LOTS 1,2, NWNE, NENW 4 -- See Acct #R0001323 for Full Legal
005	OWL CREEK RANCH HOLDINGS LLC	R0001319	0473	480	43-02-07 W/2SE, SW/4 43-02-18 W/2NE, NW/4 TOTAL ACRES 480.0
006	PENNOYER & SON INC	R0001322	3042	530.61	43-102-13 LOT 2,E/2SW, W/2SE,SWNE 43-102-24 LOTS 1,2,3, E/2NW, W/2NE, NESW, NWSE TOTAL ACRES 530.61
007	HAY CREEK LAND & CATTLE CO LLC	R0001318	2967	3833.39	43-02-03 W/2, SWSE 43-02-04 ALL 43-02-05 ALL 43-02-06 NE/4, N/2SE 43-02-08 N/2NW, SENW, NE/4, N/2SE, SESE (LESS 2 A NENE) 43-02-09 N/2, N/2S/2, S/2SW 43-02-10 NW/4, N/2SW, SWSW, W/2NE, S/2SE 43-02-11 S/2SW -- See Acct #R0001318 for Full Legal
008	BUCHER ALLEN W	R0001320	0101	2	43-102-8 TRACT IN NENE TOTAL ACRES 2.0
009	HAY CREEK LAND & CATTLE CO LLC	R0001317	3148	699.54	43-02-01 LOTS 1,2, N2NW, NWNE 43-02-02 NE, SENW, NESW 43-02-11 N2NE 43-02-12 W2NW, SENW, W2NE TOTAL ACRES 699.54
500	BLM	None		4852.07	43 N 102 W Sections:
501	U.S. IN TRUST	None		1.32	43 N 102 W Sections:
600	STATE OF WYOMING	None		1187.51	43 N 102 W Sections: