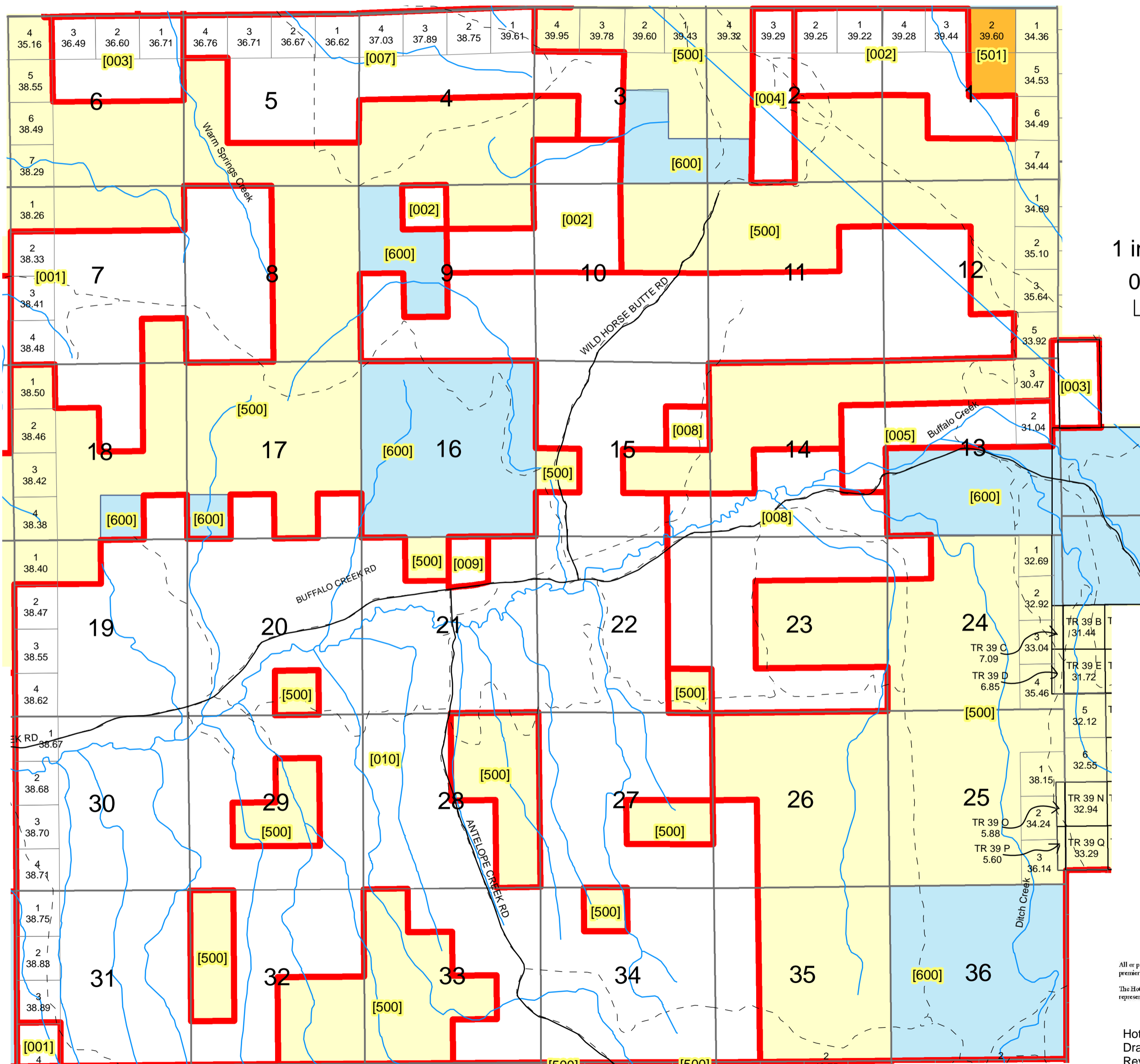


TOWNSHIP 42 NORTH, RANGE 93 WEST, 6TH P.M.

HOT SPRINGS COUNTY, WYOMING



f

1 inch equals 2,640 feet

0 2,640 5,280

Feet

- Legend**
- Private
 - Statelands
 - US_Lands
 - BLM
 - County Roads
 - Private Roads
 - Hydrology

All or portion of the PLSS information on this document is subject to copyright by premier Data Services, they are not liable for any errors or inaccuracies.

The Hot Springs County Assessor's office intends this map to be an aid in graphic representation of the displayed subject matter only.

Hot Springs County Assessor's Office
 Drawn by CGB 06/27/07
 Revised 12/31/2008
 Revised 7/15/2009

Township 42 N Range 93 W Sixth Principal Meridian

Plat #	Owner	Account	County #	Acres	Legal Description
001	BUCHANAN TRUST ETAL	R0000095	0331	914.19	42-93-07 LOTS 2,3,4,E/2SW, SENW,S/2NE,N/2SE,SWSE 42-93-08 W/2 42-93-18 W/2NE,NENW 42-93-31 LOT 4 TOTAL ACRES 914.19
002	KIRBY CREEK RANCH LIMITED PARTNERSHIP	R0000091	0745	757.19	42-93-1 LOTS 3,4,S/2NW,NWSE,NESW 42-93-2 LOTS 1, 2,S/2NE 42-93-3 S/2SW 42-93-9 NENW,S/2NE 42-93-10 NW/4 TOTAL ACRES 757.19
003	BLACK BUTTE LIVESTOCK CO INC	R0000094	0148	229.8	42 93 06 LOTS 1,2,3,SE,W,S2NE TOTAL ACRES 229.8
004	AXTELL DIANNE LYNN ETAL	R0000092	0551	159.29	42-93-2 LOT 3, SENW, E/2SW TOTAL ACRES 159.29
005	HENTHORNE LIMITED PARTNERSHIP	R0000097	0513	238.55	42-93-13 LOT 2, SWNE, S/2NW 42-93-14 SENE, NESE TOTAL ACRES 238.55
007	BAIRD JOHN L & VIRGINIA A	R0000093	0557	820.04	42-93-3 S/2NW, NESW 42-93-4 LOTS 1,2,3,4, S/2N/2 42-93-5 LOTS 1,2,3,4, SENW, S/2NE, NESW, N/2SE TOTAL ACRES 820.04
008	BAIRD JOHN L & VIRGINIA A	R0000098	3290	880	42-93-14,15,22,23,24 TOTAL ACRES 880
009	JENNIFER AXTELL TRUST	R0000099	0610	40.1	42 93 21 W/2NE/4 ALL THAT PORTION OF THE W 1190 LYING N OF THE N ROW OF BUFFALO CREEK RD TOTAL ACRES 40.10
010	AXTELL RANCHES LLC	R0000096	0022	8232.01	42 93 09 SE,S2SW,NWSW 42 93 10 S2 42 93 18 SESE 42 93 11 S2,SENE 42 93 12 SW,S2NW,SWSE 42 93 15 N2N2,S2NW,SWNE,S2SW,NESW,SWSE 42 93 17 SESE,SESW 42 93 19 LOTS 2,3,4,E2SW, SENW,E2 42 93 20 N2,SW,N2SE,SESE -- See Acct #R0000096 for Full Legal
500	BLM	None		8529.19	42 N 93 W Sections:
501	U.S. IN TRUST	None		79.6	42 N 93 W Sections:
600	STATE OF WYOMING	None		1983.5	42 N 93 W Sections: