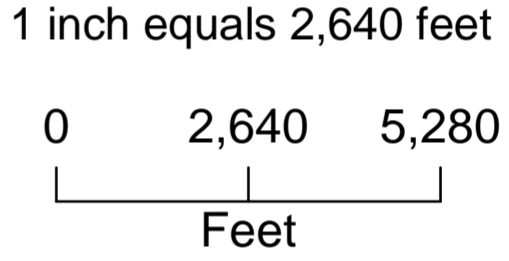
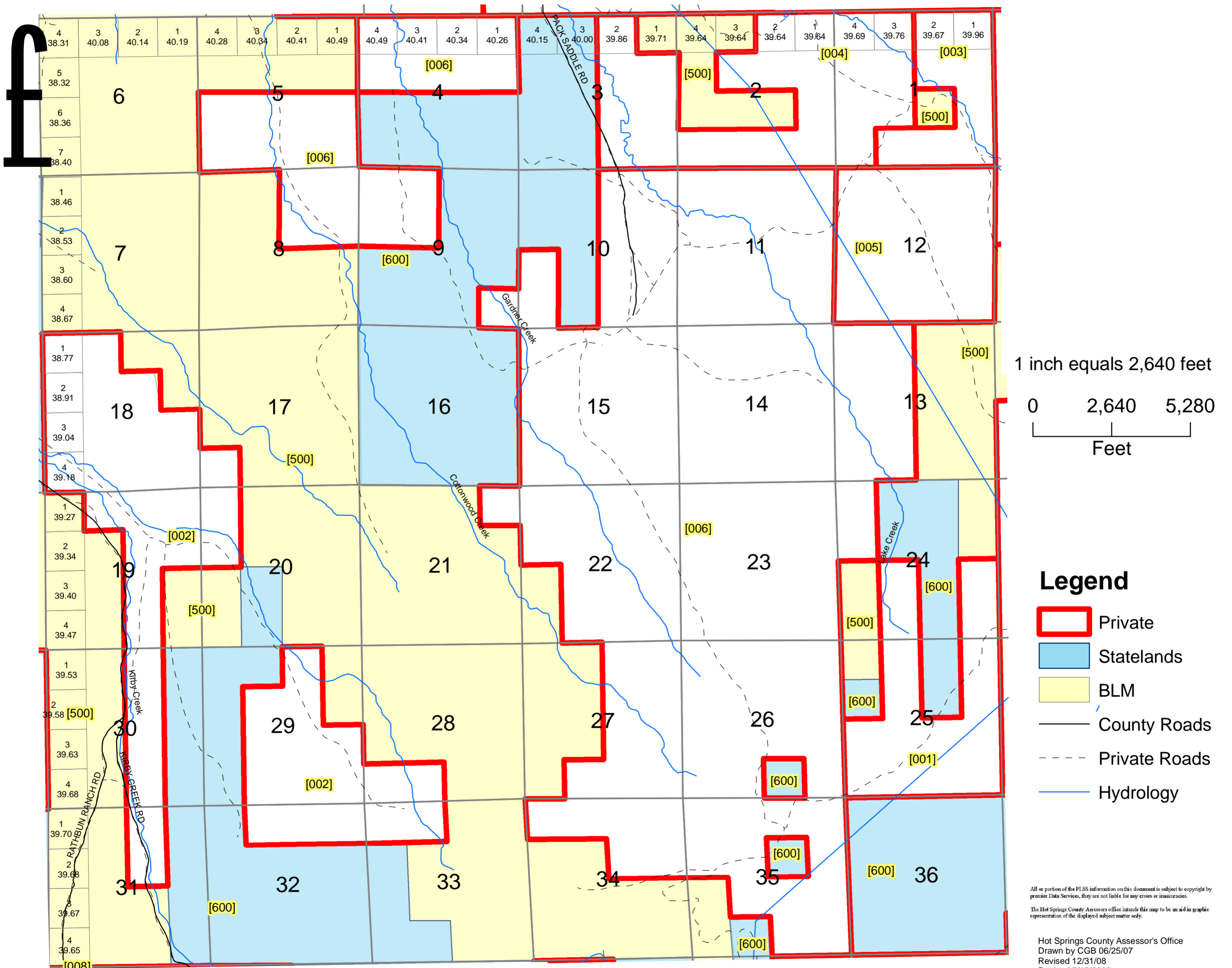


TOWNSHIP 42 NORTH, RANGE 91 WEST, 6TH P.M.

HOT SPRINGS COUNTY, WYOMING



- ### Legend
- Private
 - Statelands
 - BLM
 - County Roads
 - Private Roads
 - Hydrology

All or portion of the PLSS information on this document is subject to copyright by premier Data Services, they are not liable for any errors or inaccuracies.
 The Hot Springs County Assessor's office intends this map to be an aid in graphic representation of the displayed subject matter only.
 Hot Springs County Assessor's Office
 Drawn by CGB 06/25/07
 Revised 12/31/08
 Revised 7/15/2009

