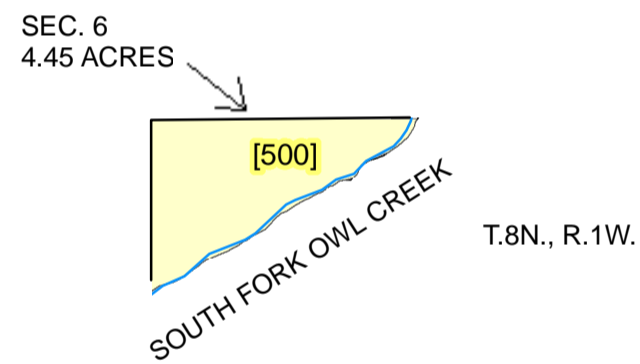


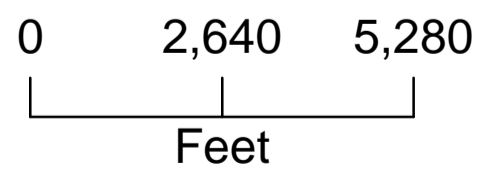
# TOWNSHIP 42 NORTH, RANGE 100 WEST, 6TH P.M.

HOT SPRINGS COUNTY, WYOMING





WIND RIVER INDIAN RESERVATION

1 inch equals 2,640 feet



## Legend

-  BLM
-  Hydrology

All or portion of the PLSS information on this document is subject to copyright by premier Data Services, they are not liable for any errors or inaccuracies.

The Hot Springs County Assessor's office intends this map to be an aid in graphic representation of the displayed subject matter only.

Hot Springs County Assessor's Office  
Drawn by CGB 07/07/05  
Revised 7/17/2009

# Township 42 N Range 100 W Sixth Principal Meridian

Plat #	Owner	Account	County #	Acres	Legal Description
500	BLM	None		4.45	42 N 100 W Sections: 6