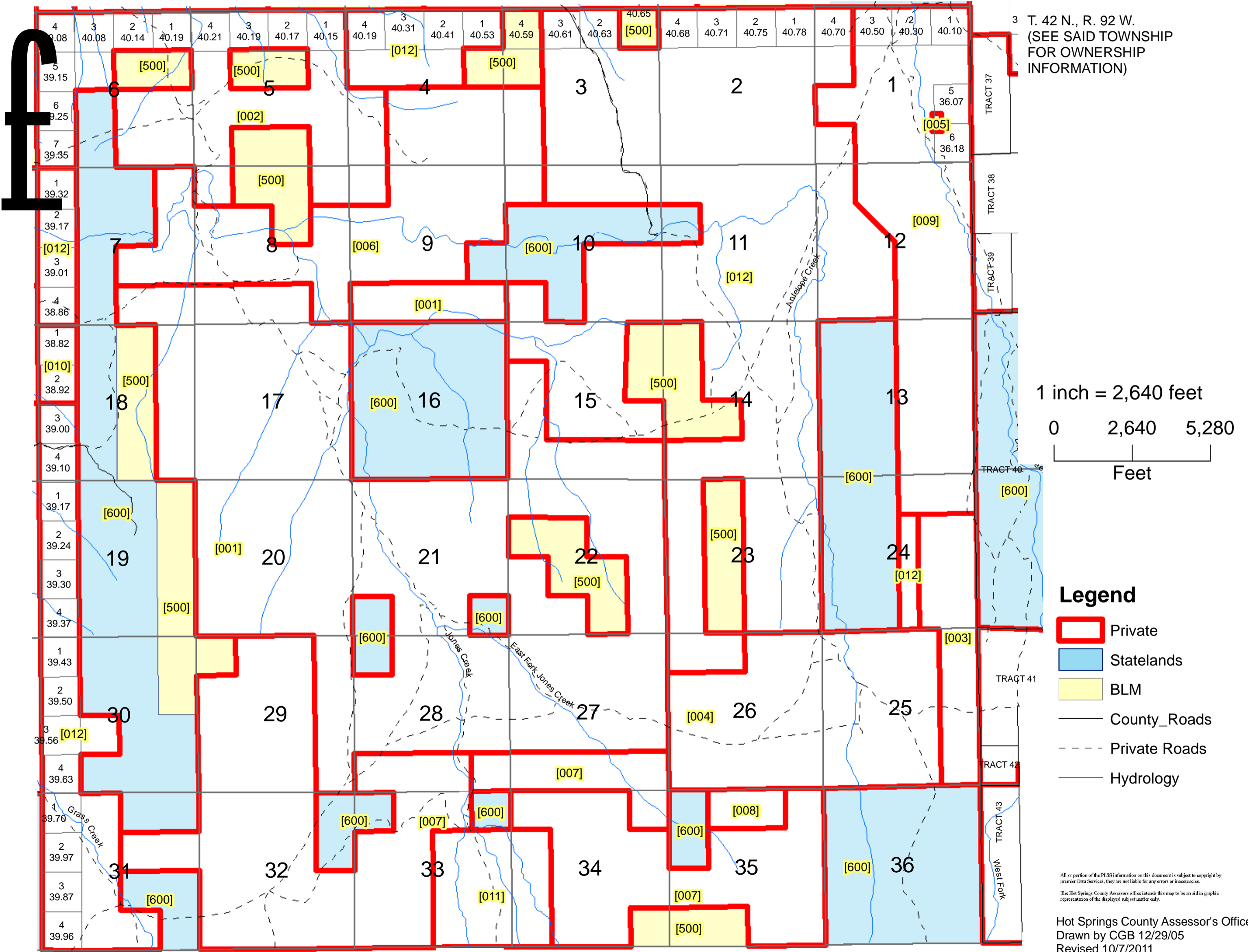
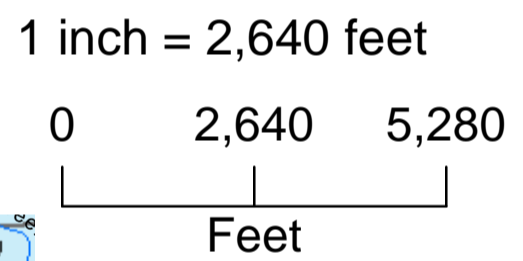


TOWNSHIP 41 NORTH, RANGE 93 WEST, 6TH P.M.

HOT SPRINGS COUNTY, WYOMING



3 T. 42 N., R. 92 W.
(SEE SAID TOWNSHIP
FOR OWNERSHIP
INFORMATION)



- Legend**
- Private
 - State Lands
 - BLM
 - County_Roads
 - Private Roads
 - Hydrology

All or portion of the PLSS information on this document is subject to copyright by premier Data Services, they are not liable for any errors or inaccuracies.
The Hot Springs County Assessor's office intends this map to be an aid in graphic representation of the displayed subject matter only.

Hot Springs County Assessor's Office
Drawn by CGB 12/29/05
Revised 10/7/2011

