

VICINITY MAP
0 500 1000 2000
SCALE (FT)

LAND DESCRIPTION

A PARCEL OF LAND LOCATED IN SECTION 5 AND SECTION 6, T.44N., R.94W., 6TH P.M., HOT SPRINGS COUNTY, WYOMING; SAID PARCEL BEING MORE PARTICULARLY DESCRIBED AS FOLLOWS:

COMMENCING AT THE SOUTHWESTERLY CORNER OF BLOCK 12 SITUATE WITHIN THE CORPORATE LIMITS OF THE TOWN OF KIRBY; THENCE N.61°51'35"E., 299.80 FEET TO THE SOUTHEASTERLY CORNER OF SAID BLOCK 12; THENCE CONTINUING N.61°51'35"E., 78.92 FEET, MORE OR LESS, TO THE EASTERLY BOUNDARY OF SAID CORPORATE LIMITS; THE POINT OF BEGINNING OF SAID PARCEL OF LAND, LOCATED N.28°09'11"W., 460.11 FEET FROM CORNER 1 OF SAID CORPORATE LIMITS;

THENCE CONTINUING N.61°51'35"E., 170.00 FEET;

THENCE S.11°51'10"E., 254.42 FEET, MORE OR LESS, TO A POINT ON THE NORTH BOUNDARY OF THAT PARCEL OF LAND DESCRIBED IN BOOK 55 AT PAGE 413 ON FILE IN THE OFFICE OF THE HOT SPRINGS COUNTY CLERK;

THENCE ON AND ALONG THE NORTHERLY BOUNDARY OF SAID PARCEL S.62°02'08"W., 98.61 FEET, MORE OR LESS, TO THE EASTERLY BOUNDARY OF SAID COOPERATE LIMITS;

THENCE ON AND ALONG THE EASTERLY BOUNDARY OF SAID CORPORATE LIMITS N.28°09'11"W., 243.90 FEET, MORE OR LESS, TO THE POINT OF BEGINNING;

SAID PARCEL OF LAND CONTAINING 0.75 ACRES, MORE OR LESS.

CERTIFICATE OF SURVEYOR

STATE OF WYOMING } SS.
COUNTY OF PARK }
I, DONALD J. LIVINGSTON, OF ENGINEERING ASSOCIATES IN CODY, WYOMING, HEREBY CERTIFY THAT THIS MAP WAS PREPARED FROM NOTES TAKEN DURING ACTUAL SURVEYS PERFORMED UNDER MY DIRECTION ON MARCH 30 AND MARCH 31, 2010; AND THAT TO MY KNOWLEDGE, THIS MAP SHOWS THE SITUATION ON THE GROUND AT THE TIME OF ITS PREPARATION.



NOTES:

1. ALL PROPERTY WITHIN THE "MEAD 2ND ADDITION" SHALL BE ZONED COMMERCIAL, AS DEFINED BY THE RULES AND REGULATIONS OF THE TOWN OF KIRBY, WYOMING.
2. THIS ANNEXATION MAP ACCOMPANIES TOWN OF KIRBY ORDINANCE 2007-55.
3. THIS MAP IS INTENDED FOR ANNEXATION PURPOSES ONLY AND DOES NOT REPRESENT A "SUBDIVISION PLAT" AS DEFINED BY STATE STATUTE OR COUNTY REGULATION. CONVEYANCE MUST BE MADE BY "METES AND BOUNDS" DESCRIPTION, NOT BY SOLE REFERENCE TO THE "MEAD 2ND ADDITION".
4. THIS MAP WAS MADE WITHOUT BENEFIT OF A TITLE REPORT.

APPROVAL

APPROVED BY THE TOWN COUNCIL OF THE TOWN OF KIRBY ON THIS 12TH DAY OF MAY, 2010.

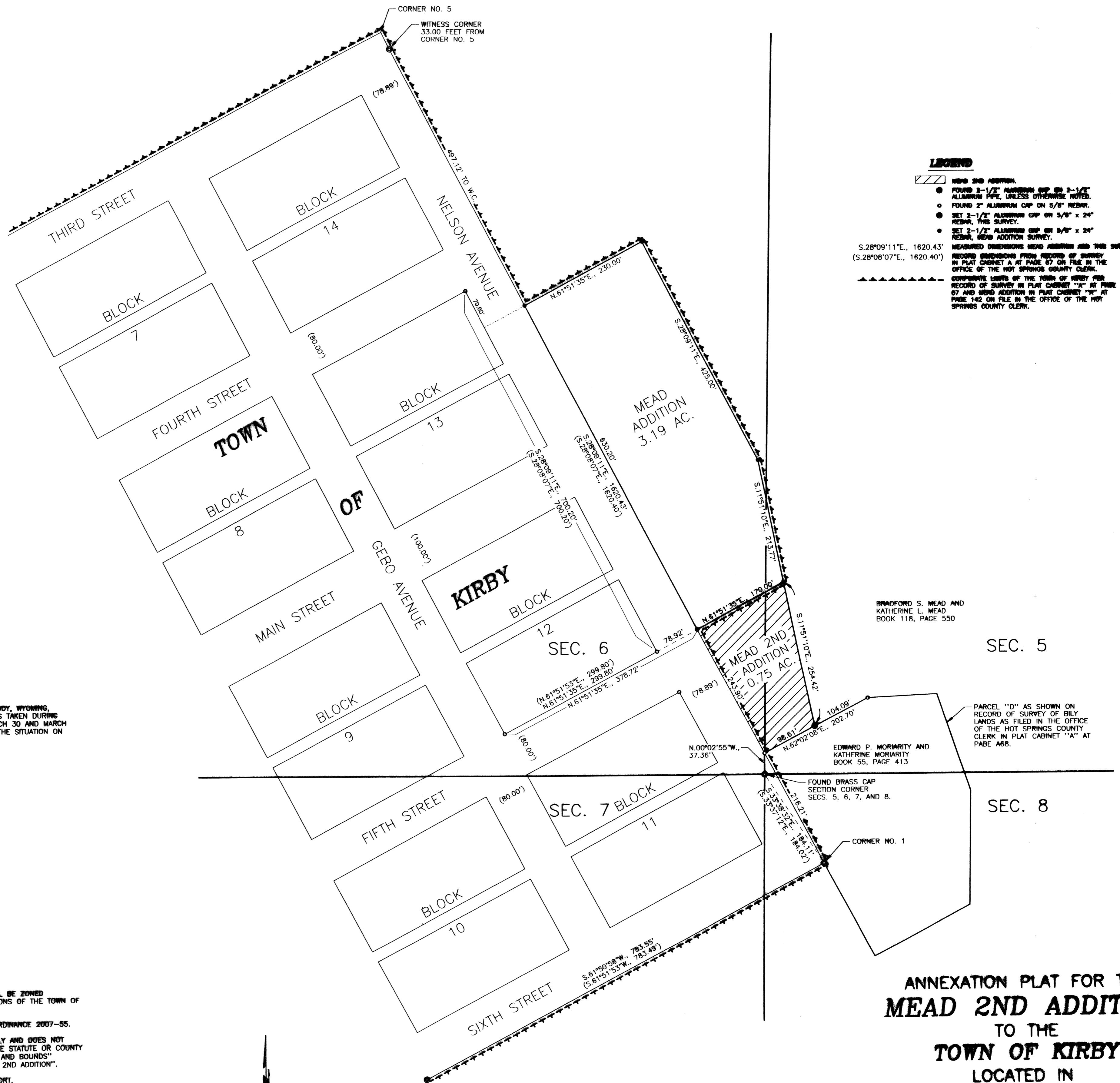
ATTEST: BRENDA FLINN, TOWN CLERK
DON LARSON, MAYOR

GRANTOR: MEAD 2ND ADDITION, TOWN OF KIRBY
GRANTEE: PUBLIC/THE
Doc 0488839 bk 141 pg 727-727 Filed At 08:08 ON 05/19/10
Hans Odde, Hot Springs County Clerk fees: 50.00
By PATTY HUGHES Deputy

FILING RECORD

THIS PLAT WAS ACCEPTED FOR FILING IN THE OFFICE OF THE HOT SPRINGS COUNTY CLERK AND RECORDER ON THIS 19 DAY OF May, 2010, AND FILED FOR RECORD IN PLAT CABINET A AT PAGE 164.

Hans Odde / Patricia A. Hughes, Deputy Clerk
HANS ODDE,
HOT SPRINGS COUNTY CLERK AND RECORDER



LEGEND

- MEAD 2ND ADDITION
- FOUND 2-1/2" ALUMINUM CAP ON 3-1/2" ALUMINUM PIPE, UNLESS OTHERWISE NOTED.
- FOUND 2" ALUMINUM CAP ON 5/8" x 24" REBAR, THIS SURVEY.
- SET 2-1/2" ALUMINUM CAP ON 5/8" x 24" REBAR, THIS SURVEY.
- SET 2-1/2" ALUMINUM CAP ON 5/8" x 24" REBAR, MEAD ADDITION SURVEY.

MEASURED DIMENSIONS MEAD ADDITION AND THIS SURVEY:
RECORD DIMENSIONS FROM RECORD OF SURVEY IN PLAT CABINET A AT PAGE 67 ON FILE IN THE OFFICE OF THE HOT SPRINGS COUNTY CLERK.

BOUNDARY LIMITS OF THE TOWN OF KIRBY PER RECORD OF SURVEY IN PLAT CABINET "A" AT PAGE 67 AND MEAD ADDITION IN PLAT CABINET "A" AT PAGE 162 ON FILE IN THE OFFICE OF THE HOT SPRINGS COUNTY CLERK.

S.28°09'11"E., 1620.43'
(S.28°08'07"E., 1620.40')

BRADFORD S. MEAD AND KATHERINE L. MEAD BOOK 118, PAGE 550

EDWARD P. MORRIS AND KATHERINE MORRIS BOOK 55, PAGE 413

FOUND BRASS CAP SECTION CORNER SECS. 5, 6, 7, AND 8.

CORNER NO. 1

CORNER NO. 5
WITNESS CORNER 33.00 FEET FROM CORNER NO. 5

CORNER NO. 5

CORNER NO. 5

CORNER NO. 5

CORNER NO. 5

CORNER NO. 5

CORNER NO. 5

CORNER NO. 5

CORNER NO. 5

CORNER NO. 5

CORNER NO. 5

ANNEXATION PLAT FOR THE MEAD 2ND ADDITION TO THE TOWN OF KIRBY LOCATED IN SECTION 5 AND SECTION 6, T.44N., R.94W., 6th P.M., HOT SPRINGS COUNTY, WYOMING

PREPARED BY: ENGINEERING ASSOCIATES CONSULTING ENGINEERS & SURVEYORS
P.O. BOX 1900
CODY, WYOMING 82414

JOB NO. 10025.01 BOOK NO. 430 03/31/10
P:\2010\10025.01\ACAD\ANNEXATION PLAT.dwg



LJC